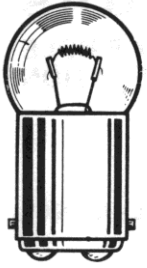


Large Incandescent Indicators

FOR MOUNTING IN 1" CLEARANCE HOLE
FOR 6 TO 32V OPERATION

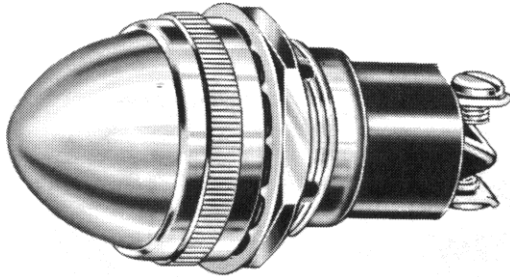


G 6
DOUBLE CONTACT
BAYONET BASE

See lamp ratings
on page K.

These series indicator lights meet or exceed requirements of MIL-L-3661.

For materials and finishes of products in this group, see page 38D.

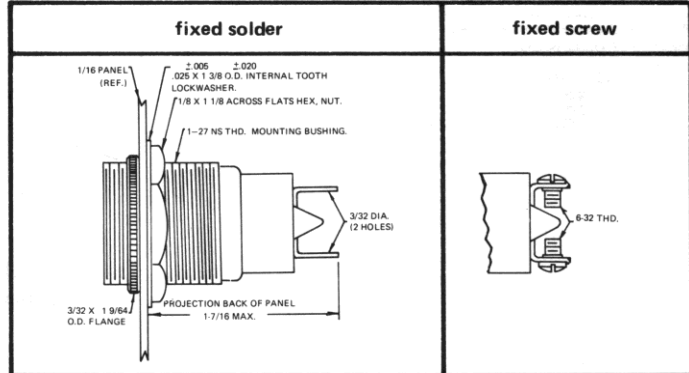


19-3204-0531-301
Large Torpedo lens

19 SERIES

BASE PART NUMBERS

WITH SCREW-ON LENS CAPS

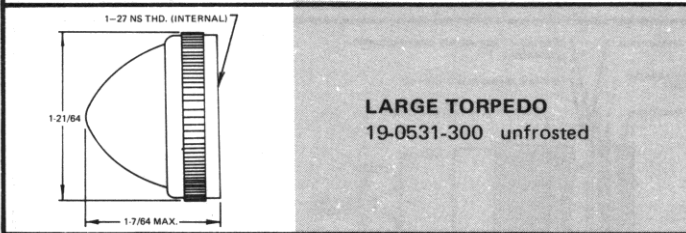


19-3406-05-301

19-3206-05-301

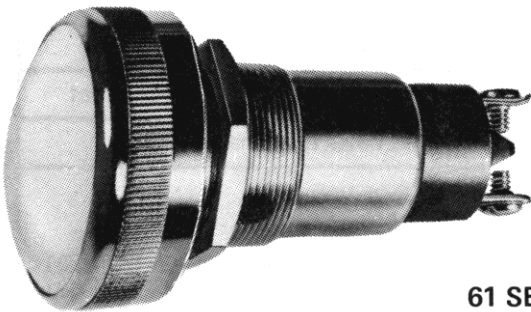
CAP PART NUMBERS

COMPLETE ASSEMBLY PART NUMBERS



19-3404-0531-301

19-3204-0531-301

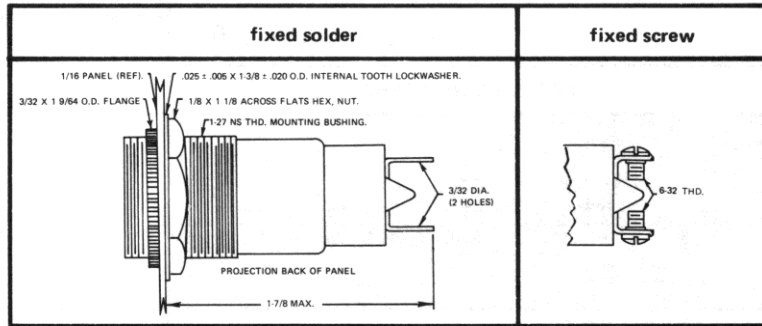


61-3204-0211-301
Large Convex lens

61 SERIES

BASE PART NUMBERS

WITH SCREW-ON LENS CAPS

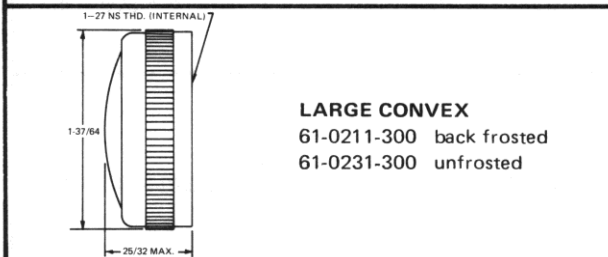


61-3406-02-301

61-3206-02-301

CAP PART NUMBERS

COMPLETE ASSEMBLY PART NUMBERS



61-3404-0211-301
61-3404-0231-301

61-3204-0211-301
61-3204-0231-301

Part numbers shown in gray are normally
in inventory at your Dialight Distributor.

Order complete with lamp to be assured of receiving the
indicator light and correct lamp together for immediate use.